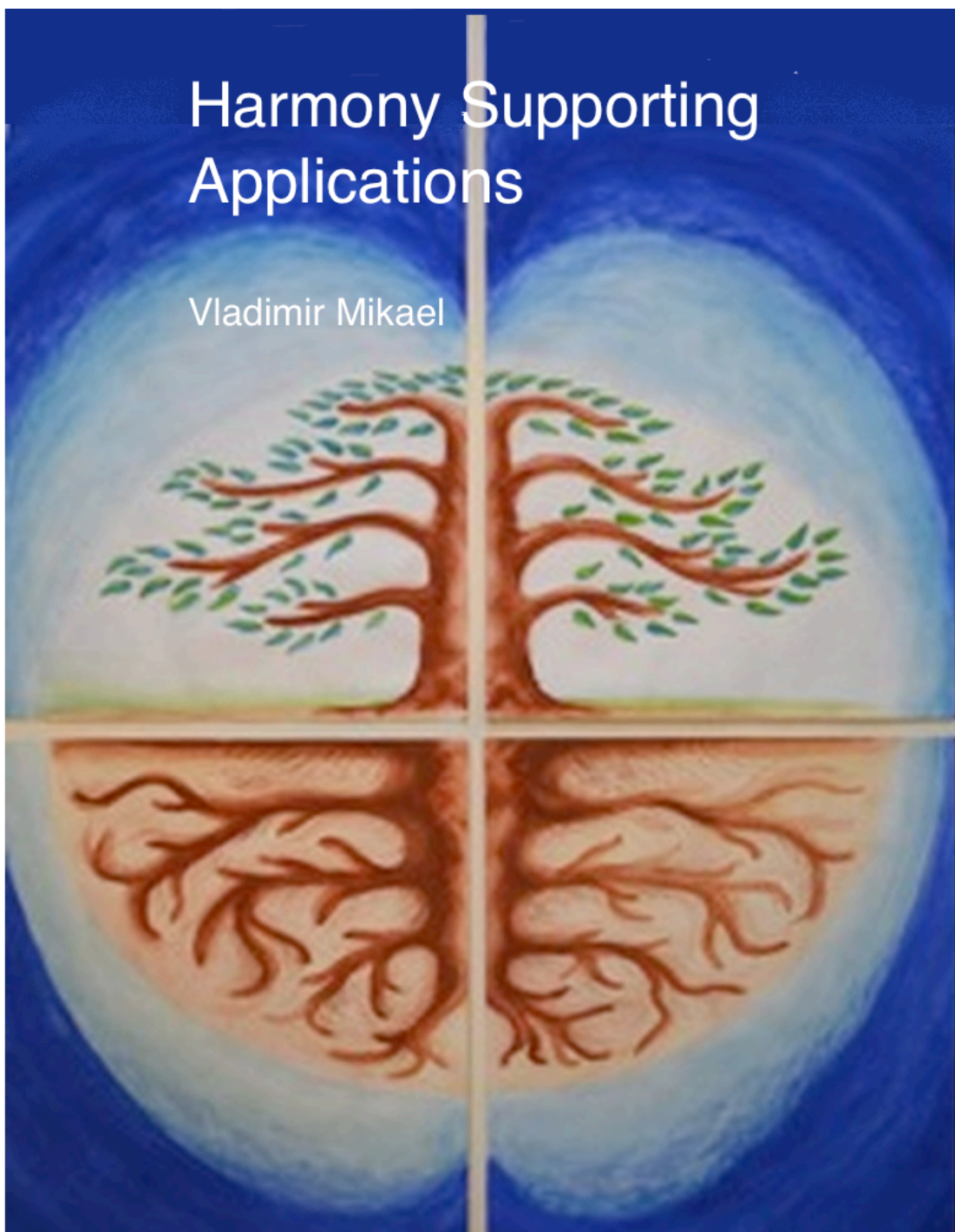


# Harmony Supporting Applications

Vladimir Mikael



# Harmony Supporting Applications

Vladimir Mikael  
Berlin, 2015

Cover illustration by Vladimir Mikael

[vladimir.mikael@gmail.com](mailto:vladimir.mikael@gmail.com)

## Introduction

We are witnesses of global environmental disaster, which increase in time. The life on Earth collapses, since just in time period from 2009 till 2015 approximately 15.000 life species died. The causes for this disaster could be found in wrong-implemented models of social organization in general, along with wrong-implemented and selected technology. The result is the hyper-production of waste. The waste is not only industrial waste, but rather the overall waste, such as waste of energy, waste of time, waste of resources, waste of life, thus waste in general. The waste in general is result of wrong-implemented common model based on pyramid as grave comb of Pharaoh, cheap replacement for the God, who is on the top above the strong blind hierarchy model, with falsified feedback information or completely without the feedback, which cause the avalanche effect, and a lot of damage. The process is intended to be controlled by checking the state of demolishing, by measuring the collateral damages at the end of avalanche. The damages are non only predictable, but rather primary aim, only hidden behind the common term collateral damages, which are obligatory to be made. Of these reasons, in result, we could be aware of enormous waste, presented at all levels of existence, globally.

In parallel, we are aware of existence of apple-man model of universe, popular affalon, from ancient times, which is accurate thus actual till recently. In modern terminology translated, it could be described as Universal Fractal Model, which describes a fusion based fixed frame, high-organized structure, as container of an overall energy-information content. Just everything what we could be aware of, could match the fractal frame structure, the matter, thus energy, which includes even though the thoughts, emotions, visions, which are just informational content of energy in motion distributed across the universe. The natural universal fractal model is genial implemented, to self-support; self-sustain using resonance power to transmit the energy at distance, and to increase the intensity of energy, accordingly to the needs of the particular fractal subsystems, implementing real-time feedback.

All of these processes of transmission of energy, which common aim is to supply the subsystems of the Whole, increasing their energy level using resonance law, due to implementing the energy transmission channel to serve simultaneously as bidirectional communication channel, thus playing the role of real-time feedback, organized in fixed frame fractal structure, as self-sustained system, which just represents another way to describe behaviors of standing waves. Another term used to describe these natural waves is scalar wave, which describes the stairways, shaped of natural logarithm spirals, which includes all fractal levels of universal fractal model, of eternal oscillating universe. Since at logarithm scale the distances between the next steps are invariant, we could say that the steps of stairways are equidistant across the logarithm scale. These stair-waves to Heavens, are bounding the subatomic energy vortexes with hyper-galactic, till the Whole Universe is included, including all fractal levels in between.

Understanding the genial simple universal model, along with basic principles and processes bounded within, we could be capable to develop the wide range of

devices, implementing the genial simplicity, keeping the harmony with the nature, and getting the universal support in resonant way as the main price. This means that, developing the devices, which are in harmony with Whole, we are going to get the optimal solutions, just avoiding any waste, with an aim to achieve the overall unity and harmony, based on universal love as highest binding force and support for abundance of life to grow and spread everywhere, across the Whole Universe.

## Acknowledgement

I'd like to thank to all of them who tuck part directly or indirectly in stopping the destructive forces who serve the death to destroy the life in general. Only of these reasons you could feel of being privileged to read this awesome text, and to enjoy along, although it is full of grammatical failures, accordingly to stupid, unpleasant, and life dangerous situation and circumstances of it's genesis. But it is the secret of the top above, so it is necessary to keep it completely unknown, in order to satisfy mega-censors who are carrying and bragging with their guns, without any roses, in order to avoid to be punished, instead of them. Even gummy-string bean-guns would not be recommended for them to play with, in order to avoid them to make some damage to each other or to themselves. Similar is to the controllers, managers, rulers, governors and tutors, who are gladly deciding instead of the others, normally as usual preferring wrong decisions in order to make a damage and to brag how are they protected and privileged even though, in order to just keeping wrong traditions. Finally, someone else would do their job with even a lot of more damaging, if they would not, because you know, they are gentle rapists, who are executing, but moderating Apocalypse, as canceling of the world, with an aim to stay the last alive, because their aim of life is to die. Furthermore, their eternal life starts after their death, therefore they are exercising all the life long how to die without to regret. Confronted with eternal living universe organized in affalon fractal structure, the base of Holy Grail, they claimed how it is heretic being against their tradition of their grand-grand fathers, the tradition of superstition and demolition.

This should be enough, without to explain in more details about the causes of very popular theory of conspiracy, unfortunately implemented in our everyday realm too long time.

Therefore I'd like to thank even more to everybody who could contribute to stop this madness of wrong traditions of global demolitions to keep going on. Analyzing and comparing the properties of some parasitic life species and some myth-beings, such as self-proclaimed gods and cuckoo, who share the properties among each other, we could out-figure the cause along with method to get rid of them, just using artificial grafted DAN sequence presented on the top above within the cuckoo DNA strings, to avoid demolishing a human and all another living beings capable to live in harmony and peace, respecting the harmony of Holy Whole, and the unity of universe at all.

In this book you are not going to read about the details mentioned above, but rather about implementing of universal fractal model to develop a wide range of devices, based on some ancient technologies, just rewritten in modern everyday grammar. In doing so, as result we're going to get high-optimized devices, harmonized with overall nature, thus not only without any wrong impact to environmental surrounding, but also supporting the life in general to grow, being in resonant way in return, supported by the Supreme Intelligence, the Holy Whole, allowing for additional efficiency, on benefits of overall.

## Content

[History of using the universal fractal model](#)

[Possible implementations of the universal fractal model](#)

[Energy-information flow schema in general](#)

[Examples of historical universal fractal applications](#)

[Examples of existing harmony preserving devices](#)

[Impacts on human society and overall nature](#)

[Post Scriptum](#)

[Links](#)

## History of using the universal fractal model

The fractal model of universe had been well known to our ancestors, thus had been in wide use along the eons, worldwide. One of the most popular descriptions of universal fractal model is apple-man, pointing the basic structural shape of the single fractal, independently of its fractal level. Let us try briefly to explain how is the universal fractal model organized. It is about multiple repeating the same structure, following some recursive schema, which consists of the smaller contributing elements of the same properties. In case of apple-man, we would have an apple shaped structure of higher order, which consists of apple shaped structures of lower order, which in turn consist of apple shaped structures of lower order, until the end of hierarchy. The universal fractal model concern, that the Whole universe is of apple shaped structure, which consists of many apple shaped structures of lower order, till the smallest material particle electron, which is of apple shaped structure as well. Essential to know is that this structure represents the frame of keeping the energy in pulsating motion due to involved resonant power. The lower fractal structures are supplied with energy by higher fractal structure, simultaneously contributing in energy balance of higher fractal order. The self-sustained system is based on real-time feedback therefore, we could be aware of the matter of fact that the universe is eternal pulsating, thus eternal living being, since it consists of living beings as an own contributing elements.

Allover the world, thus also on our planet Earth, everything is related to each other, being in resonant relation to the Whole. Bearing this simple fact in mind, it would be easy to understand that, the relief of the Crust reflected just the set of resonant expressions of the planetary vibrations. Our ancestors use to match this essential knowledge, in the down of the history of humanity, since we could witness a lot of artifacts and evidences of using of this essential life supporting knowledge in their everyday lives.

Since we know what are we searching for, it would be easy to find a lot of evidences of using the apple-man model along the eons. Let us concentrate only at one class of resonant objects, the most important for supporting and growing the life – the buildings for living within, the homes. In way of organizing the living places of ancient people we could witness the implementation of universal fractal model with an aim to out filter, and to increase intensity of telluric energy, which oscillates in harmony with overall planetary vibrations, representing in this way the gateway to the Whole Universe.

Let us now illustrate how old and how frequently had been and still are introduced the standing wave applications, by intelligent beings, capable to live in harmony with each other, as well as with the Whole Universe, regardless of the matter of fact that, they all were never uniformed, but rather just unique living beings.

Very long period of time, human beings had lived in communities, organized as hunters and collectors. On this purpose, they had need to be mobile, changing locations of their settlements, following the natural circulation of life, in this case

of animals, used to be hunted in full respect for their surviving, serving as the source of food, supporting the life in this way, to grow.

Thanks to keepers of ancient traditions, and their capability to share the knowledge of their ancestors, with an aim to support the unity and harmony, we could be aware of some important details, of building the mobile homes, and selecting the places for camps.

Preferable places for camps, were always related to the freshwater, to the relief of the surrounding ground, which was essential for expression of quality and quantity of telluric energy, which we know recently as bio-energy, since it supports the life. Not only people, but also all living beings are feeling well at such locations, which are related and bounded to the Whole, thus the Whole Earth and Whole Heavens, simultaneously. The energy-information flow across the universe could be established at these locations with easy, thus reconnecting, and healing could take place spontaneously.

To even more amplify already presented healing energy of planet Earth, our ancestors used to built their homes, as well as camps in special way, depends of particularly purpose, following certain rules. Let us briefly describe the properties of tents and camps of native people of North America, highlighting these properties, which are amplifying the telluric energy field situated at carefully selected location of their camp.

The tent in shape of cup is well known as tipi, consists of long wooden sticks, stacked into the ground following the circle line. All of wooden sticks are bounded at appropriate height together, building the skeleton of the tipi, which is finally covered by the ladder covers. In the middle of the tipi is the fireplace, having the location of highest energy, thus of highest respect, since this location corresponds to the focus of terrestrial energy field, resonantly built within the cup shape of the tent. The fireplace is used not only for heating purpose, but also for preparing the food and medicaments, mostly simultaneously. Everything what is cooked at the fireplace, tuck part in modulating the bunched energy stream, imprinting the information within in very simple way, based on the matter of fact that the steam of water, mixed with aromas moving pattern matched completely in fractal way the energy pattern of the focused energy beam of terrestrial origin. Paying additional attention to the masses of the tipi, it is gong to inshore the resonant case with planet, thus with the Holy Whole. We should bear in mind that the same energy is resonantly formed within the human bodies, as waveguides for radio waves in microwave frequency band, well known in many traditional treasures, such like Inmirsul of German mythology, described in Eddas of Yggdrasil as immeasurable light-like column, or Ida-Pingala-Sushumna Kundalini Shakti energy flow, preserved in Yoga preserved in Hindu traditional heritage. In both cases, this is about the description of standing waves formed within the human body, which plays the role of waveguide. The human bodies as resonators of sub-fractal character, situated within the tipi, which represents the higher order fractal resonant cave, are going to contribute to overall energy-information exchange happened within the tipi. Of these reasons along the ceremonies, people use to sit following the certain rules, which



include the high level of symmetry, to better match the energy flow, taking part in energy-information exchange and amplification, thus in communication with the Whole eternal living intelligent Universe.

Additional energy amplification, along with involving more contributors, is going to be achieved using some schemas of high symmetry, to arrange the locations of the tipis in camp, such as flower. In this particular case the next fractal level of amplification is going to be introduced, in form of resonant caves, which located in circle build together the new fractal level, in the similar shape of flower.



*Nomadic Tipi Makers*

Another similar type of tipi is yurt, a mobile home place of nomadic people of Eastern Asia, and North America, being of similar shape to old Viking's home places, among many others types of both ancient and modern homes. Yurts are organized in very similar way to tipis, being just of slightly different resonant shape, accommodated to be easier heated, since being more spread at colder

northern areas. Fireplace in yurt also matches the middle focal point of resonant cave, playing exactly the same role as described above in case of tipis.



One more example of amplifying the terrestrial energy field resonantly focused as standing wave fractal scale like energy beam of radio waves, which bounded the Core of Earth with all Heavens, as heritage of unknown age, could be revealed in traditional way of building the home places all over in Africa. On this purpose we're going to take as example the typical African village in shape of flower. The particular home places are of resonant shapes similar to yurt, thus everything described above matches also in this case. The circle based village home places are arranged to match the circle form, building the middle circus place in center, which is also used for fireplace located in the middle, and as the space for performing ceremonies. The reason why is plausible, since the energy level is the

highest in the middle of the village, since the particular homes are contributing in resonant way to overall energy level, exchanging the energy between each other, which pathways are crossing in the middle point of the village. The higher energy level of terrestrial energy beam, the more resonant power of bell shape is going to be established just under the central point, since additional energy vortexes of particular resonant buildings, are formed in shape of the crown, just around the center of the village. The resulting energy field has the properties of reverse gravity field, thus it is going to pull up the underground water, to flow closer to the ground surface. Of these reasons, the green trees are not-seldom to found around the traditional African villages, a lot of more then across the fields in surrounding area.



The ancient traces at the ground, founded in South Africa, of unknown age also matches the similar schema. The matter of fact is that there are a lot of imprinted resonant shapes in the ground, visible from the sky, in circle shapes of different structures.



The measurements of the intensity of the voltage field, thus of the terrestrial energy beam within the mysteriously circles and outside, have shown significant difference, since the field intensity within the buildings is many folds higher then the field intensity out of the buildings boundaries. Why is it so, we could easy be aware of, concerning the explanations given above.

It is not plausible how old are these numerous structures resonant buildings on the ground, but it is shore that the purpose of them is to bound the telluric radiation, thus to resonantly increase its intensity in their focuses. It is possible that the buildings are made using drywall technic, on irrigation purpose. These ancient technic is spread worldwide, like for instance in Mediterranean area, especially across the islands, like the next image shows in the area of Croatia.



Let us remember some another resonant buildings, of similar purpose, such as ancient amphitheaters, or labyrinths. The hill-forts had been built on the same purpose, just like newly the temples.

Experiments with pyramidal shaped roofs showed that the animals grown in such stables much stronger, more robust, more resistive to illnesses, and grow faster then the other animals of the same kind grown in stables without pyramidal shaped roof. The proportions of pyramid are important to match the resonance of Earth, as well as the height of the stable walls, concerning the mirrored pyramidal focus located under the base of pyramid. The rule of golden ratio is to be integrated, since it is built in within the trajectory of natural energy vortex, of which consist the telluric energy beams.

At this place we could pool up in our awareness, how the roofs of home buildings are look like, then we are going to find wide range of roofs shapes, which in their shapes and measures resonantly increase the telluric energy within the buildings, making them much more suitable and comfortable as living places. The convenient resonant shapes of roofs are cup, pyramid, dome, tent, and flat roof in many different variations and combinations. We could also be aware about the obviously presence of the correlation between the roofs of the home buildings, and natural shapes of mountains, hills, and even though the sand dynes. This is evidently implementation of our common heritage, of our common ancestors, of Art-Landtis civilization, which is as old as the human civilization on Earth, thus of unknown age.

The methodology of building the home places has been developed along the eons, but in essential it is kept from ancient time, till industrial age. Caused by the lack of understanding, or due to keeping the knowledge of building the resonant buildings as taboo, available only to the small group of experts, the traditional methodology of keeping the harmony and taking care about resonant landscape network, has been pushed in background, proclaimed to be not important, even though being forgotten. In parallel, the knowledge about global scaling, about natural stairways, which bound the Earth's Core with all Heavens, the knowledge based on implementing the standing waves, has been censored.

This terrible mistake, with non-predictable consequences, must be urgently recognized and repaired, repairing the resonant capabilities of global resonant landscape network, in which also the human residences contributing as resonant objects. Our home is planet Earth, the resonant object of higher fractal structure level, the gateway to the Sun, the central star of Solar system, the gateway to Pleyada's stellar constellation, which in turn represents the gateway to Milky Way, the gateway to the Whole eternal living Supreme Intelligent being, the Universe, the source of Life and Love, which is to achieve due to the revealing an overall harmony on Earth, including all sub-fractal sub-systems, contributing in doing so to the harmony of the Whole. This is the only way to achieve the universal support in self-sustained natural system, based on the supreme binding power which is not suffer the concurrent games, the top most all-pervasive, always presented power of Love, essential support for life to grow and to spread across the universe.

## Possible implementations of the universal fractal model

The universal fractal model represents the energy-matter frame, the basic structure of the Whole Universe. Everything what exists is only one contributive part of universal fractal structure, since everything consists of just energy in motion. The far the sub-fractal units are swinging in harmony with the Whole Universe, thus with all another sub-fractals bodies, regardless of which particular fractal level they are, the harmonically oscillating units are going to be supported among each other, thus supplied with essential energy-information by the whole Universe, inclusively all contributing sub-units, the far they are compatible, thus the far they could exchange information among each others, on their own as well as on overall benefits. If overall benefits are missing, this is the certain sign that something went wrong. This something which causes the disturbance of bidirectional communication with the Whole, in vampires, parasitic way of surviving, disturbing the free flow of Love.

The system is very simple, regardless what are we implementing, the methods, schemas, processes, and applications just should match the universal fractal model, in resonant way, keeping the rhythm of oscillations, thus frequency of repeating cycles, as well as measures of implemented resonant bodies, in order to match the self-resonance frequency, with an aim to achieve the harmony with planetary self-resonance swinging. In doing so, we are going to reach multiple benefits, such like due to building the applications compatible to environmental needs, influencing the life in general in beneficial way, along with optimally managing an energy needs, getting additionally supply by the Whole, just intentionally matching the resonance case. It is to bear in mind that, any body, independently of material and shape, inclusively the hole rooms such as caves, regardless of masses, has resonant capabilities.

The intensity of energy amplification could be controlled by managing the oscillations matching, depends on Q-factor of the resonant circuit. It is about the resonant amplification curve, in dependence on frequency, which has always the shape of bell. The higher Q-factor the sharper bell thus higher amplification in result, in turn for narrow range of frequency changes, around the maximum of the Q-factor curve of the bell shape. On the other hand, the lower Q-factor the lower amplification, thus wide range of frequency changes around the maximum of the Q-factor curve could be achieved.

We should be aware of analogies concerning the resonance law, since regardless if resonant circuit is electrical, mechanical, or chemical the law remains the same. It is plausible since, all processes could be represented as energy-information exchange, even though if limited to the contemplation domain only, since everything consists of energy in motion, organized in fractal apple-man structure, which matches the stairway to Heavens, or otherwise expressed the global scaling, since it is about standing waves oscillations structure of all-pervasive morphogenous field, well known as background field, the ocean of energy.

Let us count some examples, how this ancient knowledge could be implemented on overall benefits recently. First of all, and most important implementation, would be in rearranging the human buildings to better match the overall resonant needs of resonant landscape network. It means that the universal fractal model have to be implemented in architecture worldwide, on overall benefits. Just bear in mind that the ancient Chinese traditional heritage Feng Shui represents the huge knowledge base accumulated along numerous generations, which concerns exactly these aspects of human influence on environmental surrounding. In the light of understanding the universal fractal model, it would be possible to implement this valuable traditional knowledge base in architecture, with an aim to match better resonance with landscape, thus to achieve better quality and intensity of energy in both cases, locally and globally.

Architecture of the landscape, along with exploitation of raw materials are industrial branches, which should never be divided from each other, since keeping care of resonant landscape network is essential for to keep the life conditions on Earth in general. Managing the properties of resonant landscape networking, such like to swing in overall harmony, to cover the globe regularly, among the others, is essential for providing the freshwater springs, thus to provide for abundance of vegetation and in doing so abundance of life at all. Of these reasons, censoring the knowledge of implementing apple-man structure in everyday life is evidently the global crime, being extremely stupid anti-intelligent act. This kind of censorship must urgently be censored. The society structures responsible to keep the holy knowledge secretly for the sake of their own benefits, at expense of the global life, are also responsible for results of global catastrophe, which they are actively supporting. The general law of universe, have advantage compared to any particular legacy on Earth, which is not in accordance with overall, universal law. This is going to be executed, regardless who is against and who is not against just proclaimed statement, since decision doesn't rest in domain of any single being across the Solar system, while it is already made, long time ago, accordingly to the metaphysical reports, at the beginning of Creation, equal to Universe.

Any kind of devices, which needs to be supplied by energy, or which needs to exchange information with surrounding, could be made to match the universal fractal structure, to get an optimal energy-information flow, simultaneously affecting the environmental surrounding beneficial in any case for unity of living species.

Any kind of human organization could be accommodated to match the universal fractal structure, which would optimize the flowchart of energy-information significantly, concerning self-sustained system, which is never blind, thus never produce neither nor magnify the collateral damages, such as it would match in case of recently wide implemented blind pyramidal hierarchy model without any feedback, or with falsified feedback along the process, which causes the avalanche effect, the chain reaction without any control, resulting in producing the huge waste. Implementation of the wrong model is the cause of an overall inefficiency, integrated in too many human activities worldwide, which need to

be urgently replaced in order to avoid the global disaster, in form of collapse of the life worldwide.

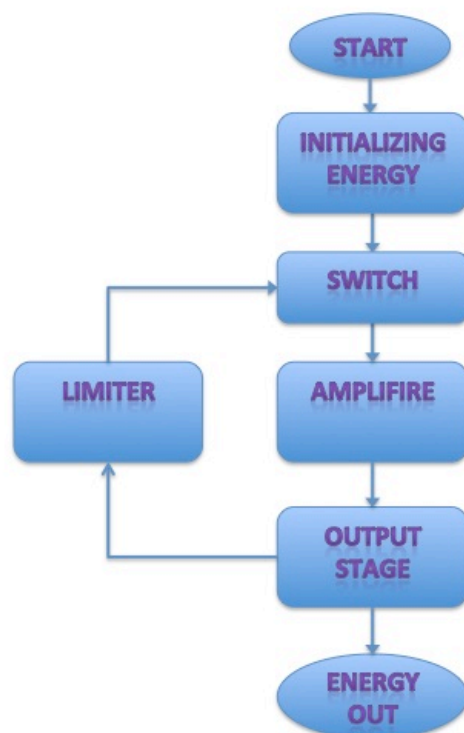
Since the implementation of the wrong templates took place too long time, the changes are much better, thus more efficient templates need to be planned and executed in order to avoid any collapse. Even though this plan could match the universal fractal schema in order to increase efficiency of execution and to optimize the process significantly, achieving huge advantages.



## Energy-information flow schema in general

Let us try to represent the simplified model of energy-informational universal flowchart to easier get understand the details about the practical implementation of the universal fractal model, to plan the processes or devices development, with an aim to match the harmony with Holy Whole, the Universe at all, the eternal pulsating thus the eternal living Supreme Intelligent Being, the source of Love and Creativity, on overall benefits.

The self-sustained principle is easiest to be explained using the energy flowchart of any kind of energy converter, since it is directly related to the basic energy frame, the universal fractal model. The additional condition to be obligatory kept is matching the self-resonant frequencies of constitutive parts of the process, or device, regardless if it is about electrical, mechanical, or timing properties, or even though about theirs combinations.



The flowchart above, if it would represented the process flow of some kind of energy converting device, would need to be initialized, implementing some kind of energy input into the system, similar to the case of initialization the pendulum oscillation. Once the extern energy source has been implemented, passing the switch, the amplification take place in form of converting environmental energy in order to increase the intensity of energy at output stage to be multiple folds higher then at the input. Of these reasons the closed loop could be established, using the regulated feedback represented by limiter of intensity. The intensity of the energy at output of the energy-converting device could be used for supplying some another devices. The closed loop represents the hart of the system, which is oscillating, running similar to the pump. The rhythm of the closed loop should

also match the overall harmony, in order to get better results. In generally, the higher frequency, the easier would it be to match the overall harmony. The high frequency devices have better efficiency along with less volume, thus could be preferable used then the low frequency devices.

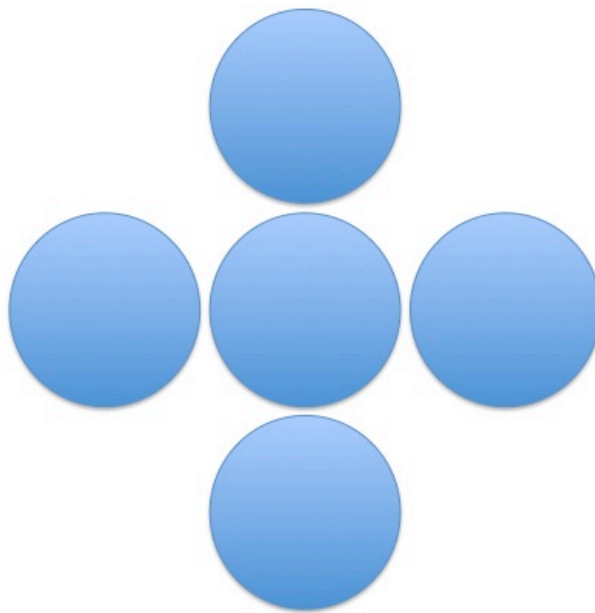
In the case that the flowchart should represent the description of some process, in spite of high abstraction level, it could be surely possible to implement it on this purpose. After initializing the process, the vortex development process takes place, similar to the milestone programming cycle implemented in wide range of software development and another kind of projects. The vortex process could be optimized to consists of numerous single vortexes such as it is the case in object-oriented programming, to increase the efficiency of developing process. Simplified structure, which sub-structures are repeating is the key of optimization, used in fabrication programming patterns.

It is very important to be aware of the matter of fact which kind of environmental energy should be involved in conversion process, and which not. We have one excellent, although negative example of mistakenly developed devices, which are sucking the ground electricity into their direct current circuits, involving it within the energy conversion process. Implementing numerous devices of described purpose would cause global catastrophe. Involving the free electricity of the Crust within the energy converting process should be very carefully designed in order to avoid discharging of the ground electricity.

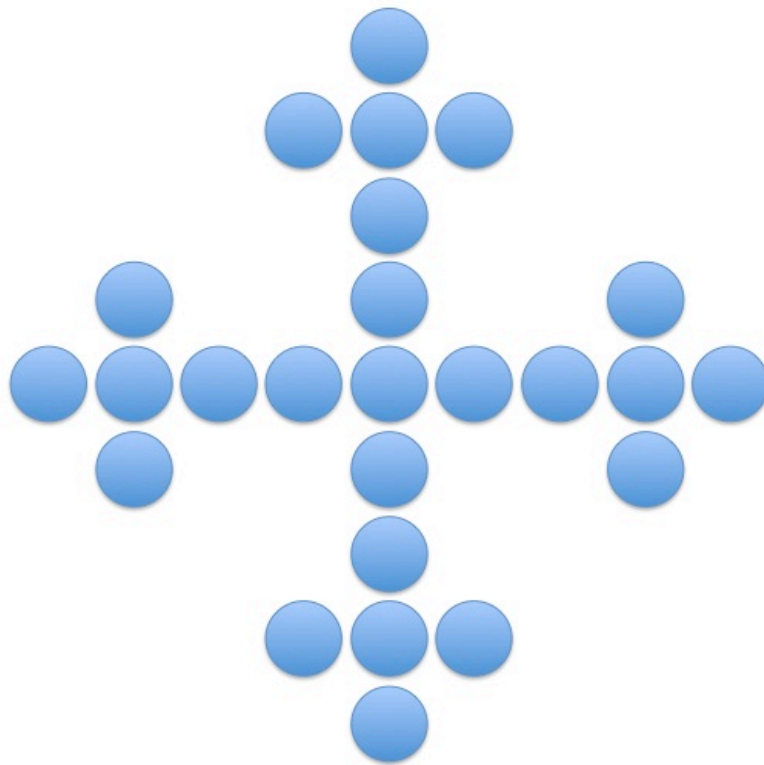
On the other hand, if we would involve gravitational energy in the process of energy conversion, it would not hurt the overall system, since the source of energy is presented in highest fractal order. The conversion of gravitation energy in another kind of energy is very wide spread natural process, therefor we don't need to be concerned with eventually existence of some hidden, unknown negative impacts. Numerous living beings already use this kind of conversion, which is built in within their motion functionalities in order to spear their available energy, thus optimize their motion. Another kind of environmental energy, which could be involved within the numerous energy-conversion systems, is telluric standing wave energy. This kind of energy, of Sun radiation origin, resonantly amplified within the planet, is also already in natural way in wide use to additionally supply all living beings with life supporting energy, thus it could be with care converted in some another kind of energy, on need.

There are numerous fractal structures, which could be implemented as the schema, to match the resonant amplification of the energy, involving the energy of the environmental surrounding to swing whit, thus to take part in conversion process. Independently of the matter of fact if the device is going to play the main role as energy converter or not, also the other devices which need energy supply, could be optimized to match the best results, concerning efficiency along with improving an impact on environment in so far to match the overall harmony, supporting the life in general in doing so.

Let us illustrate how the resonant amplification would take place implementing fractal structure. The first example concerns the central template, which repeats in similar objects arranged in circle around it building the structure of the cross. The structure of the cross could be reinterpreted as pyramidal structure, with vortexes represented as circles on schematic diagram, related to all peaks of pyramid.



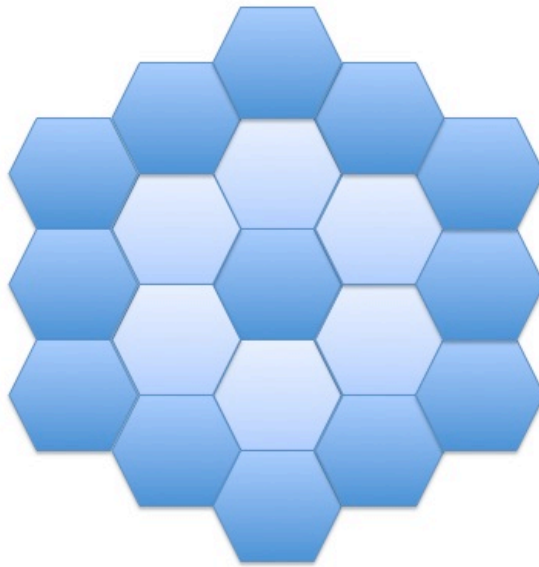
Additionally amplification of the system, we could achieve on numerous different ways, but the most plausible would be by using the pyramidal structure as template, to build the new pyramidal structure of the same kind, just of higher fractal order, such as presented on the next image. In doing so, we're going to get the vortex in result, of three steps, thus three fractal orders, with huge amplification. Matching the resonant properties of the planet, we're going to get non-predictable level of the energy amplification, which we could control just simple adjusting the feedback limiter circuit. Simultaneously, the impact on environmental surrounding is going to be supportive to the life in general, similar to all resonant objects, which match the swinging rhythm of the planet.



On the next schematic diagrams we are going to show some more fractal models, of huge number of possible combinations. This time the basic fractal structure it is going to have the geometry form of hexagram, useful for building for instance freshwater spring related applications, since the molecules of water crystalize mostly in form of resonant reflected hexagonal fractal unique snowflakes shape.

Furthermore, honeycomb for instance is also built in resonant fractal way, following the structure of the flower of life, to better match the telluric energy field and to amplify it in resonant way. The freshwater springs related applications could be resonant buildings, built on the top of some flat hill, in order to resonantly increase the intensity of telluric energy field, producing the inverse gravity field in the shape of hill, jingling bell, and finally to allow the underground water to flow against the gravity force, and to outbreak as water spring at higher altitudes, irrigating the slopes of the hills and surrounding fields.

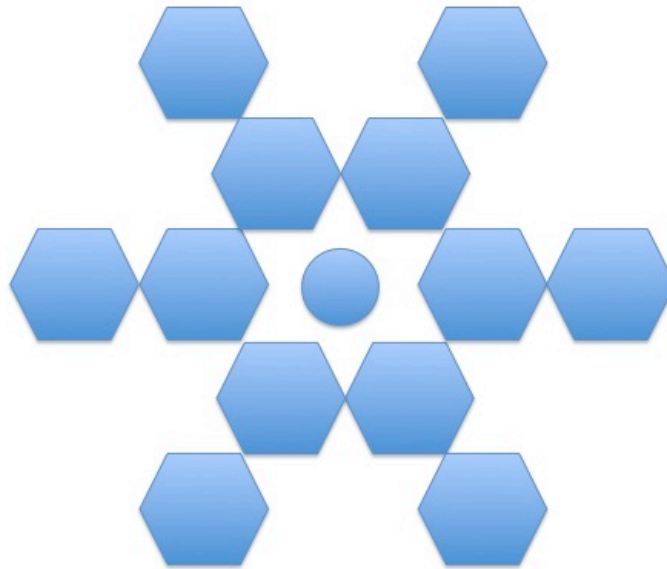
In doing so, the abundance of life is going to be supported, due to improving for intensity of energy field of resonant landscape network, exactly in the same way, as our famous ancestors had done huge period of time, implementing the Holy Knowledge, the heritage of Art-Landtis. The Holy Knowledge is related to the angels of Love and Harmony, who are all time related to us, although living at long distanced planets of long distanced stellar systems, such as Pleiades, referred also in Greece mythology, since they represent the central point around which the whole Solar system is turning around, crossing one cycle for 26.000 years.



We could recognize at the image above, another kind of fractal structure, which is more comparable to the tissue web, comparable to the water-drop circles appeared at the calm water surface. Exactly in this way the amplifying of energy intensity takes place, matching the resonance case of terrestrial standing waves. The resulting intensity of the energy field is going to summarize in the middle of the triple ring, presented on the image above, due to multiple resonant reflection, forming the bell shaped intensity curve with the maximal intensity in the middle point of the fractal structure. The stricter above would represent the triple-stage amplifier as well as in former case of fractal model example, or let's say the triple-step vortex.

On the next image it is represented another one of numerous possible implementation of the fractal structure, consisting also of basic hexagram shaped fractals, arranged to match the resonant form of snowflake. Also in this case, we are talking about the concentric rings, as triple-step vortex, but however of different diameters, such as in the case of honeycomb example. The difference between the both examples is concerning the frequency, which is in the case of honeycomb going to be higher, since the diameters of the concentric rings are smaller, compared to the following case, where the frequency of oscillations is going to be lower, accordingly to the bigger concentric circles.

This means that we could match any needed frequency we want, just by determining the diameters of the successive concentric circles of the energy waves. In doing so, we are going to find the best measure, thus frequency of oscillating of the device, which is going to be in harmony with planet Earth, thus in harmony with the Whole Universe.



The principal of fractal structure represented above could be used for developing devices, which produce the energy field in shape of bell, with maximum in the middle point of the structure. This kind of devices could be used to produce the reverse gravity field, like the ground for developing the flying vehicles. Mounting the levitating device to the perpendicular platform at each corner, the flying vehicle could be achieved, similar to the Aladdin's flying carpet.

The electromagnetic field in form of concentric rings is appeared due to repulsion force caused by pulsed supplied electromagnets, located at marked positions, shown on the image above. The distance between electromagnets is of essential importance, since it is related to the wavelength, which must be selected in this way to amplify the intensity of the energy at the next ring formed of pulsed repulsions concentric circle fields. In doing so, triple-stage energy amplifier with the focus in the middle, formed by reflection is going to be produced. In the side view to the energy field, we are going to get symmetrical bell-shaped curve with the maximum in the middle of the fractal-structured device.

Simultaneously the output electrical energy could be generated, using one additional circle of collecting inductive coils, of higher power then needed for the initializing pulse power supply. In so far, this system would be self-sustained, needed no fuel. Some extern energy-source has to be used for starting the process, just like described by the flowchart at the beginning of this chapter, regardless if it is any kind of battery, which could produce sufficient energy necessary to initialize the process, or some kind of another energy source, such as solar panel, dynamo or similar, which could charge the capacitors with sufficient energy to could initialize the process.

## Examples of historical universal fractal applications

There are numerous examples of implementing the universal fractal model in technology. In the matter of fact, everything what is exists matches the global scaling, the stairways to Heavens, in form of standing waves distributed across the universe. Accordingly to the universal fractal model, the fixed frame as universal carrier of energy-matter-information across the universe, it is easy to understand that it is not possible for any technology to exists which is not including standing waves. In the matter of fact, in the former century, many devices have been developed, designed to suppress the influence of standing waves, concerning even that they are representing disturbances. There is obviously the lack of understanding, which had lead to the global disaster we are within recently, based on hyper-production the waste.

What are we missing is developing of high efficiently devices, which contributing part among the others is an energy converter, which involves in its oscillations the swinging of the environmental energy field, which is of global scaling origin, winning in this way additional energy. The reason why the development went in wrong direction could be explained by ignorance and might of people who had bore the responsibility to decide and to select which technology is going to be implemented worldwide, hundred years ago till recently. These destructive sub-structures have to be efficiently removed, to allow the global life to grow.

There are numerous kinds of devices, which utilize the gravity force, converting it into mechanical energy, long time in use. One of oldest gravity converting ancient systems, which is for shore shadoof, introduced to provide pulling the water out of deep well easier, which is still in wide use worldwide. The system represents the prototype of crane, with moving decentered sweeper in the roll of lever, and fix length string, compared to a modern crane, which has fixed decentered lever, but adjustable length of string. We could be aware that in the nature, such systems are wide spread. For instance human motion functionality includes utilizing of the gravity force, based on multiple pendulums, for spearing the total amount of energy needs of human being. Similar is with numerous animal species.

We could be aware of existence of numerous gravity force converting devices, which are spearing input power to match the higher mechanical power output, such as flywheel, which is long term used in numerous applications. One of them is the oil pump, which has the huge flywheel, driven by the motor. The principal of working of this device completely matches the workflow represented in previous chapter, while it needs initializing energy to be invested once into the process, to start the closed loop, since the flywheel represents the amplification process on the flowchart. The mineral oil pump with flywheel, needs far less input energy to cause the same result as another kind of pumps without introducing gravity force within the energy conversing system.

Another kinds of devices are also utilizing gravity force, involving the energy of environmental surrounding to contribute in their own oscillations systems, increasing in this way the energy output.

The famous inventor [Nikola Tesla](#) had registered numerous patents, of which more than a half are still not in use, although he had highlighted this part of his work as advanced. We should bear in mind that, the rest of his inventions are nowadays spread worldwide in so far that, at least one of them contributing in every single kind of electrical devices. The rest of Tesla's fruitful work, which is still not implemented properly, is based on standing waves, being of high efficiency.

At the same time, numerous inventors inspired by Tesla's work, have made very valuable inventions, such as it is the case with inventor of the first electrical generator-converter without moving parts, [Thomas Henry Moray](#), which based upon special kind of vacuum tubes, especially developed on this purpose by him.

The famous sculptor [Edward Leedskalnin](#), Florida, USA had at 1932 single-handedly built the monument known as Coral Castle. Some of huge megalith stones, which he had processed and transferred across the long distance, have weight of over 30 tons. On this purpose, he had used the special device, constructed on [his own](#), based on reversed gravity field.

The next famous inventor was [Sir John Searl](#) who invented at 1960s his inverse gravity vehicle, based on rotating concentric rings of magnets. The Russian Academy of Science has published [confirmation report](#) of magnetic-gravity effects based on Sir John Searl inventions. The invention is based upon the ancient Hindu knowledge preserved in [Vaimanika Shastra](#), with detailed description of numerous flying vehicle models, which could be plausible understood accordingly to the knowledge about standing waves, and capability to understand the principles of inverse gravity field, such as it is in [my books](#) simple explained.



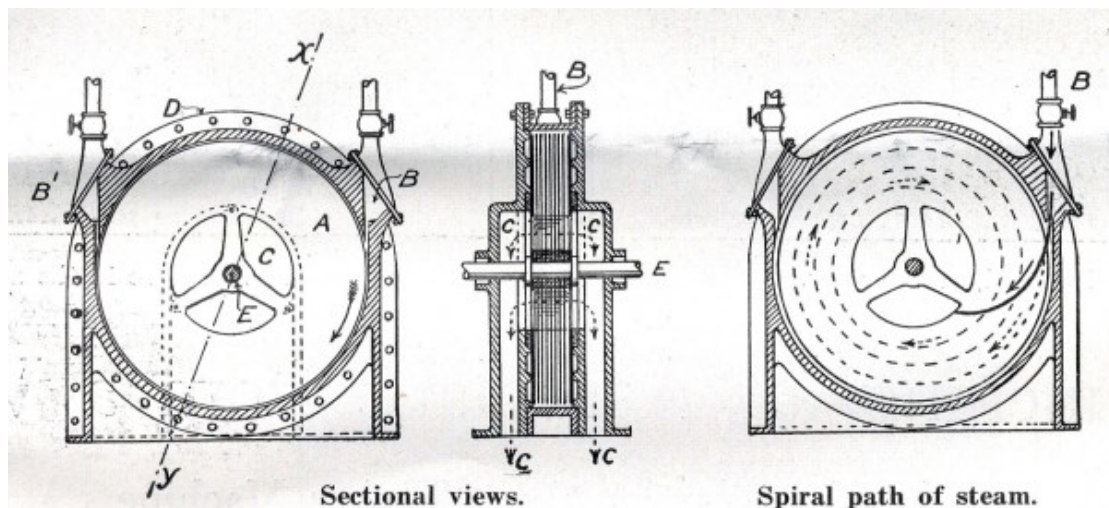
## Examples of existing harmony preserving devices

The wide class of devices are already developed, just need to be implemented worldwide, on overall benefits, since such a devices could spare a lot of effort, energy, time, and money, simultaneously being introduced in non aggressive way, preserving in doing so the overall harmony, thus supporting abundance of life, since it is the main aim of all intelligent beings, which are contributing in the planetary and universal life.

Nikola Tesla's invention of disk-stack [bladeless turbine](#), invented 1913 has not been introduced in wide range of applications till recently, since at the very beginning, the metallurgy was not developed enough, thus the materials needed for very high speed turbine were unavailable. Therefore this invention has been long time almost forgotten, but in the last time, always more and more inventors pay attention to this very important invention.

The high efficiency of the turbine based upon the way of speeding up, since the friction power between the molecules of fluid, which drives the turbine, and molecules at the surface of the disks, causes rotational motion. The fluid is implemented to the profile of the disk-stack, tangential to the disks, getting the spiral way across the disks surfaces, spinning always closer to the shaft, where the outlets holes are drilled through the whole stack of disks. In this way no blade resistance in the passive half of the cycle takes place, thus the higher efficiency if properly designed, compared to standard blade turbines.

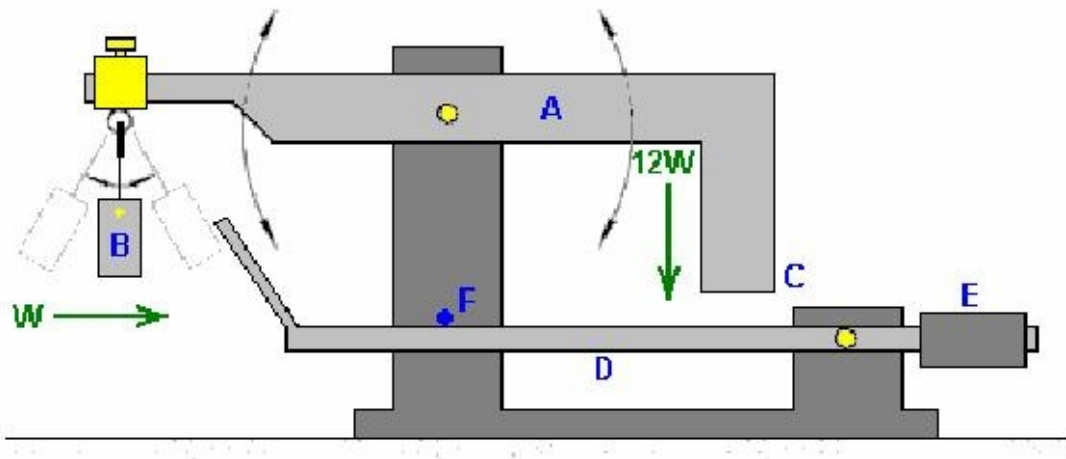
The bladeless disk turbine is free of license fees as all the others Tesla's inventions, since Yugoslavian government at the end of the last century, who inherited all Tesla's property, gave it free of charge for the sake of overall prosperity, accordingly to Tesla's work and lifestyle.



This great invention is going to replace many energy to motion converters, regardless if it is about fuel-motors or electro-motors, since for some small energy input, a lot of more energy output is going to be produced. One of modern extensions of existing Tesla's patent published by [Vladimir Mikael](#), results in

high-efficient, [high-speed turbine](#) driven by compressed air in closed loop using simple snails air-accelerator and jet-nozzle to add additional energy from environmental surrounding into the turbine, which masses are selected to match the planetary self-swinging properties, driven in resonant speed which corresponds to the maximal transition of the mechanical power, in order to produce enormous output power for very low energy input.

One beautiful example of gravity force converting devices represents the double stage mechanical oscillator with pendulum, very valuable invention of [Veljko Milkovic](#), Novi Sad, Serbia, invented at the end of the last century. It is about very simple combination of two well known principals, such as pendulum and crane. If the pendulum of certain weight is hanged at the shorter end of the crane, the longer end of higher weight is going to produce a lot of more power due to oscillating up and down, synchronously with pendulum oscillations, left and right. The pendulums oscillation is going to be translated in up and down oscillations of crane, producing additional power at output, since the weight of the crane is greater then the weight of the pendulum.



The invention of double stage mechanical oscillator is in the time always more implemented, since benefits of invention implementation include optimizing for energy needs in industrial processes. Another value of invention is plausibility of using the double stage oscillators coupled together implementing cross oscillations trajectories, of which initializing oscillations of left and right pending are of smaller energy, driving the coupled up and down directed oscillations of higher energy. The principle of work matches the universal flowchart represented in last chapter. The system could be translated using electro-mechanical analogies into the double stage electrical oscillator without moving parts, to get the wide range of devices capable to swing in harmony with environmental surrounding, matching the resonance masses of the planet, on overall benefits.

Implementing the devices in large scale, which could match the overall needs for harmony with universe, thus which are developed and used exclusively with an aim to provide for overall harmony and abundance of life supporting balance, we could in relatively short time provide much better life conditions then they are provided recently, on overall benefits.

## Impacts on human society and overall nature

Implementing optimized devices with closed loop, which are swinging in harmony with planet Earth, being developed to match the universal fractal model in the large scale, could lead the overall humanity to complete unity with the Whole Universe, with benefits of unpredictable qualities. This kind of devices could replace all another devices which are not only less efficient, but rather due to swinging out of harmony, disturbing their environmental surrounding, along with all living beings within.

This would not only be enough to replace wrong technology with right, which is matching the overall harmony, contributing in support to life in general, but rather to replace the wrong demolishing model wide implemented nowadays, which produce enormous waste, serving to death, with natural based model, similar to the universal fractal model. The old model of chain reaction caused by avalanche effect of blind hierarchy organized as pyramid as Pharaohs grave, built of people who are enslaved, produce enormous damages, causing hyper-production of waste, thus being responsible to make the dump of our home planet, of which reasons must be replaced. The blind hierarchy based on secrecies, must be replaced with the model with real time feedback. The model based on violence has to be replaced with model based on thrust. The controller who are essential for regulating information flow have to be controlled in order to avoid any falsifying of reports, providing high accurate information, necessary for making relevant decisions. The universal fractal model matches in general all needs for supporting abundance of life on overall benefits, since it is compatible with the universe. Parasitic species incompatible with the global life species, which have attacked the planet long time ago, performing very damageable influence on humanity, have to be efficiently removed, to allow the harmony to turn back on our planet, to heal the whole Earth along with all beings presented here.

Furthermore, linear way of thinking has to be replaced by holistic way of thinking, which always includes the harmony with Holy Whole. Wrong dualistic philosophies based on fighting between the counterparts have to be eliminated not because of being concurrent, but rather because of serving to death instead to serve to life, disharmonizing the overall global harmony. This would allow for implementing the fusion instead of demolishing fission in general. The explosion is to be replaced with implosion in non-aggressive way, the economy based on war and crime have to be replaced with economy based on peace and love. In doing so, the base for overall prosperity is going to be established. The humanity has to be unified with nature, with all life on Earth, and far beyond the planetary borders, since it is the nature of human. No unity with any kind of pest parasites, such like cuckoo artificial designed to disharmonize and destroy the life in general. These parasitic arts must be efficiently removed globally, to provide the conditions for life to grow and spread, swinging in harmony with universal love, the basic binding force of the Whole. Overall natural harmony is the base for overall prosperity based upon the universal law of harmony and Love, which supports the Life in general to grow.

Let us try to concentrate only to some practical implementations highlighting the aims and possible beneficial impacts on the subsystems, thus to the Whole. How it would be possible to implement the universal fractal model in steps of spiral shape flowchart, rather than linear chain reaction way, in order to involve resonant power in getting results, thus to optimize our processes, getting a lot of more results for the same effort in shorter time.

We are aware of misbalancing the natural conditions, which takes place worldwide, with fatal results on overall life. Many life species disappeared forever, in very short period of time. In the time period between 2008 and 2015, planet Earth has lost over 15.000 life species. The daily quote of destroyed species has been doubled. We have not time to wait that someone else stop the global collapse excusing by evil destiny, but rather should analyze the possible causes, develop and execute efficient solutions, to actively contribute to the performing of global changes, which are life and harmony supporting, rather than to keep mighty destructive traditions, the source of illness and collapse of global life, for the sake of some short-term benefits.

The energy transition is very modern at the last time, with a lot of policy and scientific meetings and discussions, which are not very efficiently. Everybody knows that fuel such as mineral, fossil, and nuclear, which is recently used to fulfill big part of energy needs, has to be completely replaced by fuel-less energy conversion system based on closed-loop and direct conversion. Matching resonance case, the energy source is going to be the whole universe.

The benefits are based on enormous funds, which could be collected in doing so, based on stopping implementing the fuel. Some estimation have shown that  $10^{16}$  could be at least be spared annually, thus each year in USA, in Europe, in Russian Federation, in China, in India and in the rest of the world, could be spare the same amount, which could be invest much better than to be waste, as it was the case until recently.

The fuel producing and related chemical industries should reduce or replace their production assortment in order to match better the aim of revealing the overall harmony, globally.

The energy transition could be globally introduced very rapidly in short time for over 80 % of total amount, without any issue, just on overall benefit, because it is winning business – for everybody, since the global collapse is going to be stopped, along with few additional measures, and the huge funds could be collected, thus invested to prevent collapse of any industry. Finally, the aim of development is not to produce collapse and increase the waste, but rather to provide the harmony and to support the abundance of life. In harmony are not included the species which cause disharmony – these species such as cuckoo families must be urgently removed, all over the world.

Introducing the fuel-less vehicles, it would be easy to introduce flying traffic, with huge benefits and wins, since no infrastructure expensive to build and maintain is needed any longer. The expensive traffic infrastructure could be in

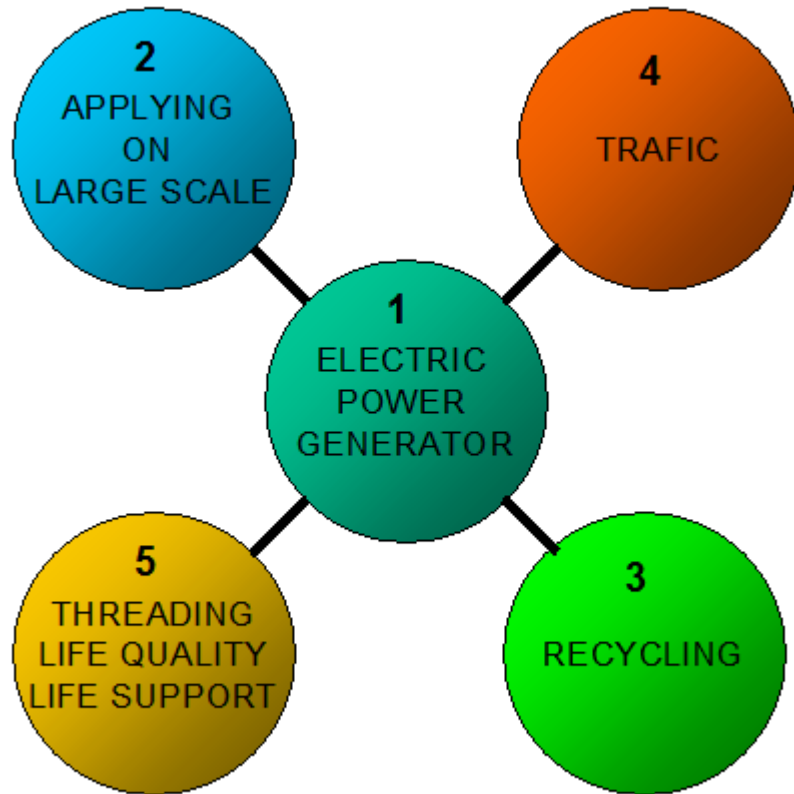
this case replaced with uniform fractal based structure of flight control, to automate the traffic at very high level, avoiding for traffics accidents, thus increasing overall security. The flying vehicles are based on quad-copter arranged levitation wheels, such like this, which are recently introduced in new military jets, which could levitate in place. Four of such levitating wheels mounted on the flying platform could care the weight of over 100 tons. The technology is already provided, just has to be implemented.



But before starting to replace the private vehicles worldwide, it would be necessary to introduce high efficient recycling system to close the material and goods cycle, to avoid the waste to be made, and to allow for conditions to be met necessary for cleaning the planet of dumps, with which it is unfortunately overloaded recently, caused by incapable leadership. Simultaneously the raw material necessary for industrial production could be won automatically, using sophisticated recycling system. There are already made some prototypes, which where not justified on investment, based on relatively high energy need. Since the energy winning could be easily resolved introducing inexpensive direct energy conversion, the sophisticated recycling system could start to be deployed.

The described processes are self-sustained supporting each other, the overall harmony, thus being supported by the universal harmony. Of these reasons the huge advantage could be achieved keeping the harmony with environment in resonant way.

One of many possible views on developing process is represented on the next image, describing the vortex with particular milestones, which all together build the pyramidal resonant shape, represented at the beginning of the book. In this way the process described in example above matches the universal fractal model, thus, along with implementation of another similar organized processes could contribute to achieve huge optimization, getting much better results then using linear process modeling. This example represents possible optimization of project management, thus process modeling, introduced to match the overall benefits based on harmony with environment and the Whole Universe.



## Post Scriptum

In this short book, we have tried briefly to represent the affalon, thus Avalon model of universe, which is base for Holy Grail, the abundance of harmony, love and life in general. The origin of this ancient universal knowledge is in Heavens, which non-dividable contributive particle is also the planet Earth, our home planet, we all love. The universe is full of life, thus the living species capable for love and harmony, of Heavens origin, we use to call angels. Shearing the necessary information is basic for the lover's communication, thus loving our planet Mother Earth we love the Whole Universe. Just bear in mind that love is always bidirectional communication, based on sharing of such information necessary for improving the life conditions, supporting the life to grow and to spread allover, since it is the sense of life and love.

Unfortunately, not all beings across the universe are capable to match the harmony and to communicate sharing the information based on love, with an aim to support and to allow for the abundance of life, love and light, making the life to flow easier in all harmony and beauty. Some species of this kind, presented here on Earth, shear the properties among each other, which are affecting the harmony of life very destructively. Furthermore, all these at the first glance different species, share the same DNA sequence, which is completely out of harmony with all another heritage material of life species of planet Earth, being not only incompatible, but rather parasitic, the source of illness, extremely poisonous, danger, thus unneeded. Removing all parasitic species using the key DNA sequence, which is not in resonance with life in general, we are going to meet conditions for revealing the universal harmony allover the planet, and far beyond, since the planet is only one contributive particle of the Whole system, organized in Holy Harmony, Avalon, thus universal fractal model, well known as global scaling, describing the harmonic scale which bound the Whole Universe in one single unite. Our obligation as human beings, protectors of life and harmony is to defend it regularly, implementing the knowledge of our ancestors, merged with modern science, implementing technology and all available methods, to remove the pest completely. Finally, not human is fault, but rather cuckoo. Performing the global-healing, using high selectively medication to out-filter only parasitic species from the whole collection of living beings, is going to establish the fundamentals of revealing the overall harmony. Removing the parasitic species, which are disturbing the information flow, translated the informational content to match their own sick needs to produce mismatching and collapse, the conditions necessary for full bidirectional communication in love and light with Whole Universe is going to be enabled again. In doing so, the New Golden Age, we all wait too long on, the Age of Aquarius, the age of unity, prosperity and harmony from collective dream of countless generations, is going to be established.

This is the beginning of the beautiful friendship.



## Links

[Heritage of Atlantis](#)

[Nikola Tesla](#)

[Nikola Tesla - Bladeless Turbine](#)

[Thomas Henry Moray](#)

[Edward Leedsalnin](#)

[Edward Leedsalnin - Magnetic Current](#)

[Sir John Searl - SEG Magnetic Gravity Invertor](#)

[Russian Academy of Science - SEG Effect Confirmation Report](#)

[Vladimir Mikael - Compressed Air Driven Turbine in Closed Loop Mode](#)

[Veljko Milkovic - Double Stage Oscillator](#)

[Extended link list along with additional literature](#)

[Vladimir Mikael - eBooks](#)

